



Grand Hôtel de l'Opéra

★★★★

Toulouse

1 PLACE DU CAPITOLE

31000 TOULOUSE

www.grand-hotel-opera.com

[Virtual tour of the hotel](#)

FRONT DESK RECEPTION 24H/24

TEL: + 33 (0)5.61.21.82.66

FAX : +33 (0)5.61.23.41.04

opera@guichard.fr

GROUPS & SEMINARS :

MRS. DIJOUX CHLOÉ

TEL : +33 (0)5.61.21.40.00

comopera@guichard.fr

FOLLOW US

@grandhoteldelopera



The Grand Hotel de l'Opéra, symbol of "art de vivre" is nowadays one of the most famous hotels in Toulouse. Located on the Capitole square, in the heart of the "pink" city, the history of the hotel stand among the oldest of Toulouse.

In the Middle Ages, this beautiful building housed a university run by religious people: the Collège St Martial. The college welcomes scholarship holders. It was founded in 1359 by Pope Innocent VI, who in his youth had studied law at the University of Toulouse. Spared when most of the colleges in Toulouse were abolished in 1551, it remained in existence only with difficulty until the French Revolution. The college was then closed during the Revolution and in 1792 became **the Théâtre de la Liberté et Egalité**.

While the Théâtre du Capitole closed its doors between 1800 and 1818 for important renovations, the Théâtre de la Liberté et Egalité became the venue. But in 1818, the latter was closed and the old college was finally demolished while the architect Jacques-Pascal Virebent had the Place du Capitole developed. From 1909, the venerable building was converted into a hotel and in 1980 became a sumptuous 4-star hotel. It combined the nobility of Toulouse's private mansions with the charm of Italian villas. In 1996, a fire caused the closure of 36 rooms. Bought 2 years later by the Rouleau family, the Grand Hôtel de l'Opéra regained all its splendor and took a new start with a complete renovation and interior architecture magnified by Elisabeth Drapeau.

Today, the history of the establishment is perpetuated through the preserved remains of the former Saint-Martial College that can be seen in the inner courtyard and above the bar of the Grand Hôtel de l'Opéra.

The whole team is looking forward to welcoming you in our haven of history and peace facing the Capitole.

Vérane Fenech
Hotel manager



STAY AT THE GRAND HÔTEL DE L'OPÉRA

The hotel has 55 rooms decorated with stretched tissues and lithographs signed Matisse or Saintignan on the walls as well as marble bathrooms. With a serene and voluptuous atmosphere expanding to every part of the hotel, you will experience a wonderful moment in our luxury unique hotel.

ALL OUR ROOMS ARE EQUIPPED WITH:

- Bathroom with bath or shower
- Satellite TV, Canal +
- Hairdryer
- Air conditioning
- Telephone
- Mini Bar
- Safety box
- Courtesy tray
- Free WIFI access
- Nespresso© machine
- Kettle



*Please note that some rooms in our hotel
are only accessible by stairs.*

AVAILABLE ON REQUEST:

- Ironing board and iron
- Hospitality products (shower gel, shampoo, conditioner, body lotion, bathing cap, dental care kit, shaving kit etc.)
- Baby bed
- Sofa bed (extra charge) from PRESTIGE category
- Room with 2 separate beds (twin) (extra charge of €10/night) from the DELUXE KING category
- Extra blankets & pillows
- Love Box (extra charge)



RACK RATES

CLASSIC room	from €110 to €340
COMFORT room	from €125 to €355
DELUXE room	from €185 to €410
PRESTIGE room	from €185 to €455
SUITE	from €215 to €530
JUNIOR SUITE with Capitole view	from €215 to €530
Buffet breakfast	€ 24/pers. <i>or €22 for direct reservations</i>
Sofa bed	€50 /day
Extra charge for small pet	€15 / day
City tax	€3.60 / night / day.

Check-in : 3:30pm / Check-out : 11:30am

Early check-in and early check-out on request (extra charge)

*Prices are VAT incl. and net, per room and per night.
Prices are subject to modification without any notice.
VAT and taxes in effect.*



Grand Hôtel de l'Opéra

★★★★

Toulouse

3 Classic rooms



All our rooms are different,
photos are not contractual.

- Decorated with stretched toile de Jouy fabrics
- From 17 to 18 m².
1 bedroom is more spacious but no view
- Single room
- 150x190 cm or 160x190 cm bedding
- Bathroom with shower or bath and hairdryer (bathrobe and slippers extra: €10 per person)
- Minibar (extras not included in the room rate) and safety box
- Nespresso® coffee machine and kettle
- View of the hotel's inner courtyard and located on the 1st floor of the hotel (except for 1 room without a view)

15 Comfort rooms



All our rooms are different,
photos are not contractual.

- Ideal for 1 or 2 people
- Decorated with stretched toile de Jouy fabrics
- From 19 to 28 m²
- 160x200 cm bedding
- One of our rooms is accessible to people with reduced mobility
- Bathroom with shower or bath and hairdryer (bathrobe and slippers extra: €10 per person)
- Minibar (extras not included in the room rate) and safety box
- Nespresso© coffee machine and kettle
- View on the courtyard or on the roofs with pink tiles from Toulouse

18 Deluxe rooms



All our rooms are different,
photos are not contractual.



- Decorated with stretched toile de Jouy fabrics
- From 21 to 34 m²
- Bedding 160x200 cm (Deluxe Queen) or 180x200 cm, or 2x90 cm or 2x100 cm (Deluxe King)
- Bathroom with shower or bath and hairdryer (bathrobe and slippers extra: €10 per person)
- 3 rooms with balcony and 1 with private terrace
- View on the interior courtyard or on the roofs
- Nespresso® coffee machine and kettle
- €10 supplement for a twin bed

12 Prestige rooms



All our rooms are different,
photos are not contractual.



- Decorated with stretched toile de Jouy fabrics
- From 25 to 42 m²
- Bedding 160x200 cm or 180x200 cm or 2x90 cm or 2x100 cm
- Bathroom with shower or bath (including 3 bedrooms with bath and shower), hairdryer and bathrobe and slippers
- 2 rooms with patio or balcony
- Nespresso© coffee machine and kettle
- Sofa-bed (€50 extra charge) for a maximum of 2 children under 12 years old or 1 child under 18 years old
- €10 supplement for a twin bed

3
Junior Suites
with Capitole view



All our rooms are different,
photos are not contractual.

- Decorated in shades of 'Opera red' and 'toile de jouy'.
- From 27 to 32 m²
- Bedding 180x200cm or 2x100cm
- Nespresso® coffee machine and kettle
- Bathroom with shower or bath, hairdryer, bathrobe and slippers
- €10 supplement for a twin bed

4 Suites



All our rooms are different,
photos are not contractual.

- Decorated with toile de Jouy stretched fabrics or red or yellow stretched fabrics
- From 27 to 49 m²
- Bedding 180x200cm or 200x200cm
- **3 suites with sofa bed** (sofa bed supplement of €50/night for a maximum of 2 children under 12 or 1 adult)
- **1 Suite with terrace (473) lift + a few steps to climb**
- Nespresso® coffee machine and kettle
- Bathroom with bath, hairdryer, bathrobe and slippers
- €10 supplement for a twin bed



The hotel shares the courtyard with 'Le Bouillon Capitoile' and the Michelin-starred restaurant 'Les Jardins de l'Opéra'.



OUR SERVICES

Start the day with a generous buffet breakfast served from 6.45am to 10.30am on weekdays and from 7.30am to 11am at weekends, public holidays and some school holidays.

Continental breakfast is served in your room every day from 7am to 11am.

Relax for a moment in the hotel bar. This warm and cosy venue offers a selection of wines, champagnes, aperitifs and digestives.

Treat yourself to a moment of relaxation with one of our massage therapists, who will target your solo or duo needs during a personalised massage session in your room.

ORGANISATION OF YOUR EVENTS

For the organization of your seminars, meetings and prestigious cocktail parties in the heart of Toulouse, the Grand Hôtel de l'Opéra offers you three equipped spaces: the Verrière lounge, the Capitouls lounge and the bar.

Under a high vaulted red brick ceiling, the Capitouls lounge, a reflection of Toulouse's architecture, can accommodate up to 75 people. The Verrière room, more intimate, benefits from daylight and can accommodate up to 30 people, depending on the configuration. The bar, is the ideal space to welcome your aperitifs, cocktails or wine of honor.

You can have your meals in one of our partner restaurants, or prefer a cocktail or meal tray in the hotel's lounges.

Contact us for the organization of your events in Toulouse. Our dedicated team will accompany you from start to finish to offer you a tailor-made service.

Capitouls meeting room

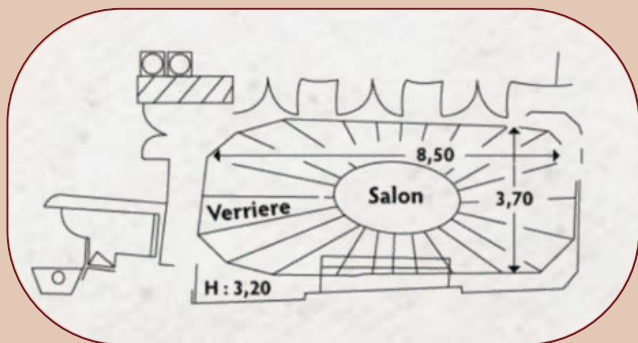


Verrière meeting room



Salon Verrière

35 m², day light



Réception

30



Théâtre

25



Classe

15



U

18



Dimensions

35 m²



Hauteur

3.20



Lumière du jour

x

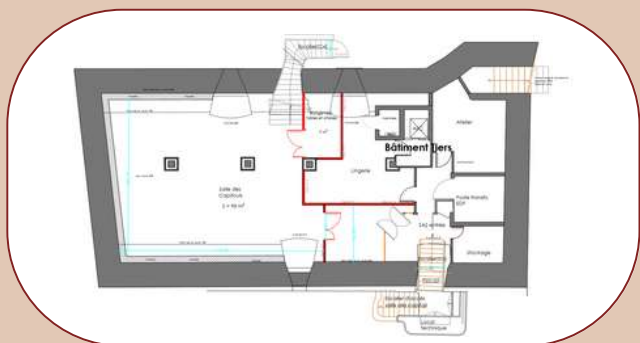


Localisation

Rdc

Salon Capitouls

98 m², vaulted cellar



Réception	Théâtre	Classe	U	Dimensions	Hauteur	Lumière du jour	Localisation
75	50	30	25	98 m ²	3.50	-	-1

Espace Bar

55 m², glass roof



Réception

40



Théâtre

30



Classe

-



U

-



Dimensions

55 m²



Hauteur

3.50



Lumière du jour

x



Localisation

Rdc

IN BRIEF

RECEPTION

*Open 24 hours a day
Arrival : 3:30 pm Departure : 11:30 am*

BAR

*Open every day until 11.30pm maximum (depending on the day)
Wide choice of wines, Champagnes... and cocktails of the week*

BREAKFAST

*Served buffet style or in your room every day
- from 6.45am to 10.30am on weekdays
- from 7.30am to 11.00am at weekends, public holidays and school holidays*

ROOM SERVICE

*Breakfast : from 7:00 to 11:00 am
Snacking at any time (cold plates and jars)
Le Bouillon Capitole : from 12pm to 2pm and from 7pm to 10pm*

RESTAURANT

You can make restaurant reservations with one of our partners at reception.

PARKING

*Capitole public car park 24 hours a day:
Negotiated rates available at reception*

SEMINAR

*Salon Verrière (35 m² – capacity : 30 people)
Salon Capitouls (98 m² – capacity : 50 people)
Espace bar (55m² - capacity : 50 people)
Our Sales Department will be happy to guide you and organise your events*

OUR WELLNESS PARTNER

*Quality massages and personalized services offered in your room for complete relaxation with our partner
Book at least 48 hours in advance*



Grand Hôtel de l'Opéra

Toulouse



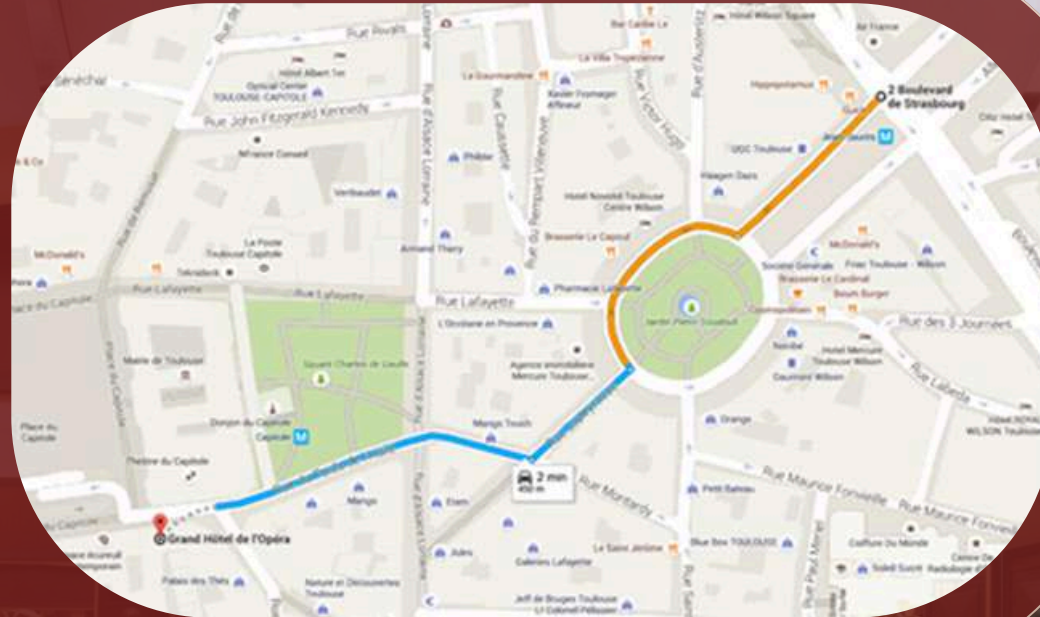
ACCESS

Public car park of the Place du Capitole

Negotiated rates available at reception

The height of the Capitole parking lot is limited to 1.80m

Vehicles with a height of 1.90 m can park in the Jean Jaurès car park.



BUS ACCESS

Access by bus is via rue Rémusat. Access to Place du Capitole is limited to buses of **maximum 10m**.

- If the bus is less than 10m long, it can go as far as Place du Capitole, in front of the hotel, to drop off customers.
- If it is longer than 10m, the bus will have to drop off customers at Place d'Arménie on the Allées Jean Jaurès.

Touring coaches can park at the Matabiau station car park or at Zenith.





Grand Hôtel de l'Opéra

Toulouse

We care about the environment, and our establishment is committed to reconciling hotel quality and civic responsibility by taking an environmentally-friendly approach.



Clef Verte

Premier label
de tourisme durable
pour les hébergements
touristiques et les restaurants
laclefverte.org

BW Premier
COLLECTION®
by BEST WESTERN



Grand Hôtel de l'Opéra

Toulouse

1 PLACE DU CAPITOLE - 31000 TOULOUSE

Tél : +33 (0)5 61 21 82 66 Fax : +33 (0)5 61 23 41 04

Website : www.grand-hotel-opera.com Email : hotelopera@guichard.fr

HEAD OFFICE : 39 AVENUE LARRIEU THIBAUD 31082 TOULOUSE CEDEX 1

SAS SOCIETE DU GRAND HOTEL DE L'OPERA AU CAPITAL DE 700 000 € - RCS TOULOUSE B 434 366 266 000 22

APE 5510Z - CODE COMMUNAUTAIRE : FR 34 434 366 266

FOLLOW US

@grandhoteldelopera

